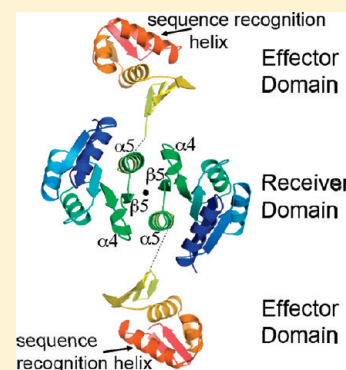


Structure of the Response Regulator PhoP from *Mycobacterium tuberculosis* Reveals a Dimer through the Receiver Domain

Smita Menon and Shuishu Wang*

Department of Biochemistry and Molecular Biology, Uniformed Services University of the Health Sciences, 4301 Jones Bridge Road, Bethesda, Maryland 20814, United States

ABSTRACT: The PhoP protein from *Mycobacterium tuberculosis* is a response regulator of the OmpR/PhoB subfamily, whose structure consists of an N-terminal receiver domain and a C-terminal DNA-binding domain. How the DNA-binding activities are regulated by phosphorylation of the receiver domain remains unclear due to a lack of structural information on the full-length proteins. Here we report the crystal structure of the full-length PhoP of *M. tuberculosis*. Unlike other known structures of full-length proteins of the same subfamily, PhoP forms a dimer through its receiver domain with the dimer interface involving $\alpha 4$ - $\beta 5$ - $\alpha 5$, a common interface for activated receiver domain dimers. However, the switch residues, Thr99 and Tyr118, are in a conformation resembling those of nonactivated receiver domains. The Tyr118 side chain is involved in the dimer interface interactions. The receiver domain is tethered to the DNA-binding domain through a flexible linker and does not impose structural constraints on the DNA-binding domain. This structure suggests that phosphorylation likely facilitates/stabilizes receiver domain dimerization, bringing the DNA-binding domains to close proximity, thereby increasing their binding affinity for direct repeat DNA sequences.



The emergence of multiple-drug resistant (MDR) and extremely drug resistant (XDR) strains of *Mycobacterium tuberculosis* (MTB) marks a new threat of this old ailment to human health.¹ One way to combat the drug resistance problem is to develop new drugs that attack novel targets of the pathogen. Two-component signal transduction systems (TCSs) are attractive novel drug targets because they control major signaling processes involved in bacterial adaptation to changing environments and, importantly, are absent from mammals.² Most TCSs are composed of two proteins: a sensor histidine kinase (HK) and a response regulator (RR). The HK senses environmental signals and autophosphorylates on a conserved histidine residue. The phosphate group is then transferred to the cognate RR on a conserved aspartate residue to activate this RR for downstream signal propagation.³

In the MTB genome, there are 30 genes coding for TCS proteins.^{4,5} Many of the TCSs are important for MTB virulence. MTB strains with mutations in RR genes, such as *prpA*,⁶ *devR*,⁷ *mprA*,⁸ and *phoP*,^{9,10} are defective for growth in macrophages and mice. PhoP is a major transcription regulator that up regulates 44 genes and down regulates 70 genes.⁹ An MTB *phoP* mutant has defects in its cell envelope. It lacks complex lipids such as sulfatides and trehaloses and also shows greatly reduced expression of structural genes for their biosynthesis.⁹ These results indicate that PhoP is involved in the regulation of complex lipid biosynthesis. However, mutant MTB strains with knockouts of individual genes involved in complex lipid biosynthesis do not have significant defects in virulence.^{11,12} Because PhoP regulates more than 110 genes, it is likely that some other genes or a combination of several genes are responsible for the effect of the *phoP* mutation on virulence.¹³

Several recent studies of the avirulent MTB strain, H37Ra, point to the importance of PhoP in virulence of the pathogen.^{11,14,15} A point mutation in *phoP*, which changes a serine residue, Ser219 on the DNA sequence recognition helix,¹⁶ into a leucine, plays an important role in the loss of virulence in H37Ra. The mutation causes the loss of secretion of the major T-cell antigens ESAT-6 and CFP-10.¹⁴ The wild-type H37Rv *phoP* partially restores the strain's ability to grow in macrophages and mice. These results suggest that the PhoP-PhoR TCS is a potential target for developing new antibiotics to combat drug-resistant strains of MTB.

Most RRs contain two distinct domains: an N-terminal receiver domain and a C-terminal effector domain.³ The receiver domain contains an absolutely conserved aspartate residue, which receives a phosphate group from the cognate HK. Phosphorylation of the receiver domain causes structural changes to the protein and thus, in some way, activates the effector domain. In the case of those RRs that function as transcriptional regulators, the effector domain is a DNA-binding domain. The RRs are divided into subfamilies based on structure and/or function of their effector domains. PhoP belongs to the OmpR/PhoB subfamily of RRs, named from their representative members OmpR and PhoB.^{17,18} This subfamily is the largest among RRs. The C-terminal domain of the OmpR/PhoB subfamily RRs binds DNA and has a typical structural fold called the winged helix-turn-helix motif. Despite decades of intensive research and accumulation of a large amount of structural

Received: April 13, 2011

Revised: May 25, 2011

Published: June 02, 2011

and functional data, it is still unclear how phosphorylation regulates the DNA-binding activities of the OmpR/PhoB subfamily RRs.

The N-terminal domain of RRs has a well-conserved structure, composed of a central 5-stranded β -sheet, sandwiched by helices on both sides. Several structures of the isolated receiver domains in complex with beryllium fluoride to mimic the phosphorylation-activated structure have been reported.^{19–22} These activated receiver domains form symmetric dimers with a common interface through the $\alpha 4$ - $\beta 5$ - $\alpha 5$ face. Some receiver domains also form dimers through the same interface in the absence of beryllium fluoride,^{19,21} suggesting that the active-form dimer can exist in the absence of phosphorylation. Phosphorylation likely stabilizes the dimer and thus shifts the equilibrium toward the dimeric form. In contrast to the symmetric dimer structure of the activated receiver domains, most of the known DNA binding sequences for the OmpR/PhoB subfamily RRs have been found to be direct tandem repeats, suggesting that these proteins bind DNA as tandem dimers. The structure of the effector domain of PhoB from *E. coli* in complex with its *pho* box DNA has been reported.²³ The isolated PhoB effector domain binds to DNA as a tandem dimer. Full-length response regulators of the OmpR/PhoB family have been difficult to crystallize, and to date there are only five structures reported: RegX3,²⁴ MtrA,²⁵ and PrrA²⁶ from MTB, and DrrB²⁷ and DrrD²⁸ from *Thermotoga maritima*. All structures show monomers in the crystal and have some intramolecular domain interactions, except RegX3, which forms a domain-swapped dimer through the receiver domain. DrrD shows the least interactions, while MtrA has the strongest domain interface that buries the sequence recognition helix of the DNA-binding domain and the $\alpha 4$ - $\beta 5$ - $\alpha 5$ face of the receiver domain, suggesting obstruction of the DNA binding elements by the nonactivated receiver domain as a possible regulatory mechanism for DNA-binding activities by phosphorylation. To a lesser extent, the PrrA structure also shows some obstruction of the DNA-binding elements by the $\alpha 4$ - $\beta 5$ - $\alpha 5$ face of the receiver domain. However, in solution, unphosphorylated PrrA can exist in a conformation with the DNA-binding elements exposed for binding DNA.²⁶ Both DrrB and DrrD structures have the DNA-binding elements fully exposed, suggesting that they are able to bind DNA without activation by phosphorylation.

The MTB PhoP protein is able to bind its own promoter in the unphosphorylated state, and the DNA binding site is proposed to contain direct repeats.^{29,30} Here, we report the crystal structure of full-length PhoP from MTB. The structure shows that PhoP forms a dimer in the crystal through the $\alpha 4$ - $\beta 5$ - $\alpha 5$ face of the receiver domain, a dimer interface similar to that of the activated receiver domain structures. The linker that tethers the receiver and effector domains is disordered. The two effector domains that are tethered to the receiver domain dimer do not interact with each other or with the receiver domains. Our structural results are consistent with observations that the protein is able to bind DNA in the absence of phosphorylation activation. Phosphorylation is likely to enhance the receiver domain dimer association but unlikely to change the freedom of the effector domains. Therefore, the mechanism of activation by phosphorylation of the MTB PhoP is likely through higher affinity of the receiver domain dimer to bring the effector domains in close proximity, thus increasing their affinity for specific DNA sequences with two direct repeats.

EXPERIMENTAL PROCEDURES

Cloning, Expression, and Purification. The MTB *phoP* gene (Rv0757) was amplified from the genomic DNA of MTB strain

H37Rv by polymerase chain reactions (PCR) with the KOD Hot Start DNA polymerase (Novagen). The following primers were used for PCR: 5'-primer CCAGCATATGCGGAAAGGGGTTGATCTCG and 3'-primer CCAGAAGCTTTCATCGAGGCTCCCGCAGTACG, which generate *NdeI* and *HindIII* restriction sites (underlined). Amplified DNA was cleaved by restriction enzymes *NdeI* and *HindIII*, purified by agarose gel extraction, and ligated into a modified pET28a plasmid (Novagen) linearized with the same enzymes. The pET28a vector was modified by inserting a DNA sequence encoding a tobacco etch virus (TEV) main protease cleavage site before the *NdeI* restriction site as described previously.¹⁶ The resulting plasmid pET28-*phoP* encodes a protein with an N-terminus 6XHis tag, which can be cleaved by the TEV protease. The plasmid was transformed into BL21(DE3) competent cells (Novagen) for protein overexpression.

Cells containing the pET28-*phoP* plasmid were grown and induced for protein overexpression, and cells were harvested and lysed, as described previously.¹⁶ The cell lysate was centrifuged at 37000g for 30 min, and the supernatant was applied to a column containing a 1–3 mL bed volume of Ni-NTA agarose (Qiagen). The column was washed with 10 column volumes of wash buffer (50 mM sodium phosphate, pH 7.4, 500 mM NaCl, and 20 mM imidazole), and PhoP was eluted in 50 mM sodium phosphate, pH 7.4, 500 mM NaCl, and 250 mM imidazole. Fractions containing the PhoP protein were pooled, mixed with $\sim 150 \mu\text{g}$ of His-TEV(S219V) protease,³¹ and dialyzed against 1 L of buffer containing 50 mM sodium phosphate, pH 7.4, 200 mM NaCl, and 5 mM MgCl_2 overnight at 4 °C. The dialysis mixture was loaded onto a Ni-NTA agarose column to remove the His-TEV protease, the cleaved His-tag, and the undigested protein. Fractions containing PhoP lacking the His tag were pooled and concentrated, and the protein was further purified on a Superdex 200 column (GE Healthcare) equilibrated with 20 mM Hepes, pH 7.5, 200 mM NaCl, and 10 mM MgCl_2 . The purified protein was analyzed by SDS-PAGE and MALDI mass spectrometry for purity. Protein concentrations were determined by Bradford assay³² using BSA as a standard.

For production of selenomethionine-labeled protein (SeMet-PhoP) similar procedures were followed, except that M9 minimal media³³ containing 50 $\mu\text{g}/\text{mL}$ kanamycin were used in place of LB. Once an OD_{600} of 0.6 was reached, amino acids lysine (100 mg), phenylalanine (100 mg), threonine (100 mg), isoleucine (50 mg), leucine (50 mg), and valine (50 mg) along with selenomethionine (60 mg) per liter were added directly to the culture as solids. The temperature was lowered to 18 °C, and the cells were induced with 50 μM IPTG for 16–18 h. Subsequent expression and purification of SeMet-labeled PhoP was identical to that described above for the native protein. The yield of SeMet-labeled protein was ~ 5 –7 mg per gram of cell pellet.

Crystallization and Data Collection. Purified protein was concentrated to $\sim 3 \text{ mg}/\text{mL}$ for crystallization. The best crystals were obtained from drops set up with well solutions containing 0.1 M Hepes, pH 7.5, 1.8 M ammonium sulfate, 1.5% PEG 400, and 12% 1,2-propanediol. Before data collection, crystals were soaked for 2–5 min in a cryogenic solution, similar to well solutions but with 1.2 M ammonium sulfate and 20% 1,2-propanediol. Crystals were then flash-cooled in a cryostream of N_2 gas at 100 K on the goniometer. Diffraction data were collected at beamline X6A of the National Synchrotron Light Source, Brookhaven National Laboratory, with a Quantum-270 CCD detector. Data reduction and scaling were done with HKL-

Table 1. Data Collection Statistics for MTB PhoP^a

	Se-edge	Se-peak	Se-remote
wavelength (Å)	0.9804	0.9800	0.9537
space group	<i>P</i> 2 ₁ 2 ₁ 2	<i>P</i> 2 ₁ 2 ₁ 2	<i>P</i> 2 ₁ 2 ₁ 2
cell dimensions			
<i>a</i> , <i>b</i> , <i>c</i> (Å)	79.27, 138.33, 58.93	79.18, 138.09, 58.88	79.23, 138.24, 58.91
resolution (Å) ^b	30.0–2.5 (2.54–2.50)	30.0–2.5 (2.54–2.50)	30.0–2.5 (2.54–2.50)
<i>R</i> _{merge} ^b	0.139 (0.858)	0.134 (0.669)	0.138 (0.765)
<i>R</i> _{pim} ^b	0.058 (0.261)	0.057 (0.231)	0.057 (0.248)
<i>I</i> /σ(<i>I</i>) ^b	16.44 (2.39)	17.47 (2.51)	16.64 (2.77)
completeness (%) ^b	99.2 (98.3)	99.0 (96.5)	99.3 (98.3)
redundancy ^b	8.6 (8.7)	8.1 (7.4)	8.5 (8.6)

^a One crystal was used for collection of all data sets at three wavelengths; data were collected at 100 K. ^b Values in parentheses are for highest-resolution shell.

Table 2. Refinement Statistics for the MTB PhoP Structure^a

resolution (Å) ^b	30.0–2.5 (2.56–2.50)
no. reflections	21 622
<i>R</i> _{work} / <i>R</i> _{free} ^b	21.2 (25.2)/24.5 (28.1)
no. atoms	
protein	3514
water	78
<i>B</i> -factors	
protein	35.0
water	33.5
no. other molecules/ions ^c	5 SO ₄ (85.5)
	1 1,2-propanediol (79.2)
rmsd bond lengths (Å)	0.017
rmsd bond angles (deg)	1.61

^a The data set collected at the Se-remote wavelength was used for structural refinement. ^b Values in parentheses are for highest-resolution shell. ^c Values in parentheses are the average *B*-factors.

2000.³⁴ Data collection and processing statistics are listed in Table 1. The *R*_{pim} values were calculated with SCALA³⁵ using unmerged scaled data from HKL2000 as input. The crystals belong to the space group *P*2₁2₁2, with 2 molecules per asymmetric unit and a *V*_M (Matthews volume) of 2.88 Å³/Da. The data were converted to CCP4 format, and structure factor amplitudes were calculated by TRUNCATE and other programs in the CCP4 Suite.³⁶

Structural Determination, Model Building, and Refinement. The structure of PhoP was determined by multiwavelength anomalous diffraction using PHENIX AutoSol and AutoBuild.³⁷ The structural model was refined against the diffraction data using REFMAC.³⁸ After each cycle of refinement, the model was manually adjusted with weighted 2*F*_o – *F*_c and *F*_o – *F*_c electron density maps with COOT.³⁹ The model was refined for a few cycles with TLS refinement⁴⁰ before convergence. Final refinement statistics for the refined coordinates are reported in Table 2. Structure validation by MolProbity⁴¹ suggests that over 96% of protein residues fall in the most favored region of the Ramachandran plot.

Sedimentation Velocity Analytical Ultracentrifugation. Sedimentation velocity scans were obtained using a 4-place An-60 Ti analytical rotor in the Beckman Coulter ProteomeLab XL-A ultracentrifuge. The PhoP protein was in a buffer containing 20 mM Hepes pH 7.5, 200 mM NaCl, 10 mM MgCl₂, and

10% glycerol, at two concentrations, 0.9 and 2.3 mg/mL. Experiments were carried out using 400 μL of sample in a double-sector 12 mm thick charcoal filled Epon centerpiece. For each sample, 400 absorbance scans at wavelengths 250 and 280 nm were acquired overnight at 20 °C with rotor speeds of 45 000 rpm. SEDFIT (version 12.1b) was used to analyze the sedimentation velocity scans.

Limited Trypsin Digestion of PhoP. Limited proteolysis of PhoP was carried out at room temperature for 1 h in 50 μL total reaction volume containing 1.2 μg of PhoP and 20 ng of trypsin in 20 mM Hepes (pH 7.5), 50 mM NaCl, 5% glycerol, and 1 mM MgCl₂. Proteolysis was stopped by addition of 2X Lamelli dye. The trypsin-digested fragments were resolved on a Novex 18% tris-glycine gel and transferred to a polyvinylidene difluoride membrane (Pierce) and visualized by staining with the Simply-Blue safe stain (Invitrogen). Each fragment was then excised and sent to the Protein Core Facility at Columbia University for N-terminal sequencing.

RESULTS

Protein Purification and Structure Determination. The full-length PhoP protein of MTB was expressed in the *E. coli* strain BL21(DE3) and purified by two passes through a Ni²⁺ column followed by gel filtration, as described in the Methods section. The His tag was removed by TEV protease digestion before the second pass of the Ni²⁺ column. The resulting protein contains three extra residues, GluThrHis, at the N-terminus, which originated from the plasmid vector. SeMet-labeled protein was produced and purified in a similar way (see Methods for details). Mass spectroscopy analysis confirmed 100% incorporation of selenium atoms.

The purified PhoP protein has a solubility of ~3 mg/mL in most of the common buffers with pH from 6 to 8. Gel filtration studies gave a single peak with an apparent molecular weight between monomer and dimer, suggesting that the protein exists in solution in rapid equilibrium between monomer and dimer. Analytical ultracentrifugation confirms the existence of dimers in solution. The dimeric form increases from 2% to 16% of the total protein as the protein concentration increases from 0.9 to 2.3 mg/mL.

The best protein crystals were obtained from drops containing 0.1 M Hepes, pH 7.5, 1.8 M ammonium sulfate, 1.5% PEG 400, and 12% 1,2-propanediol. The crystals are thin plates ~1 mm

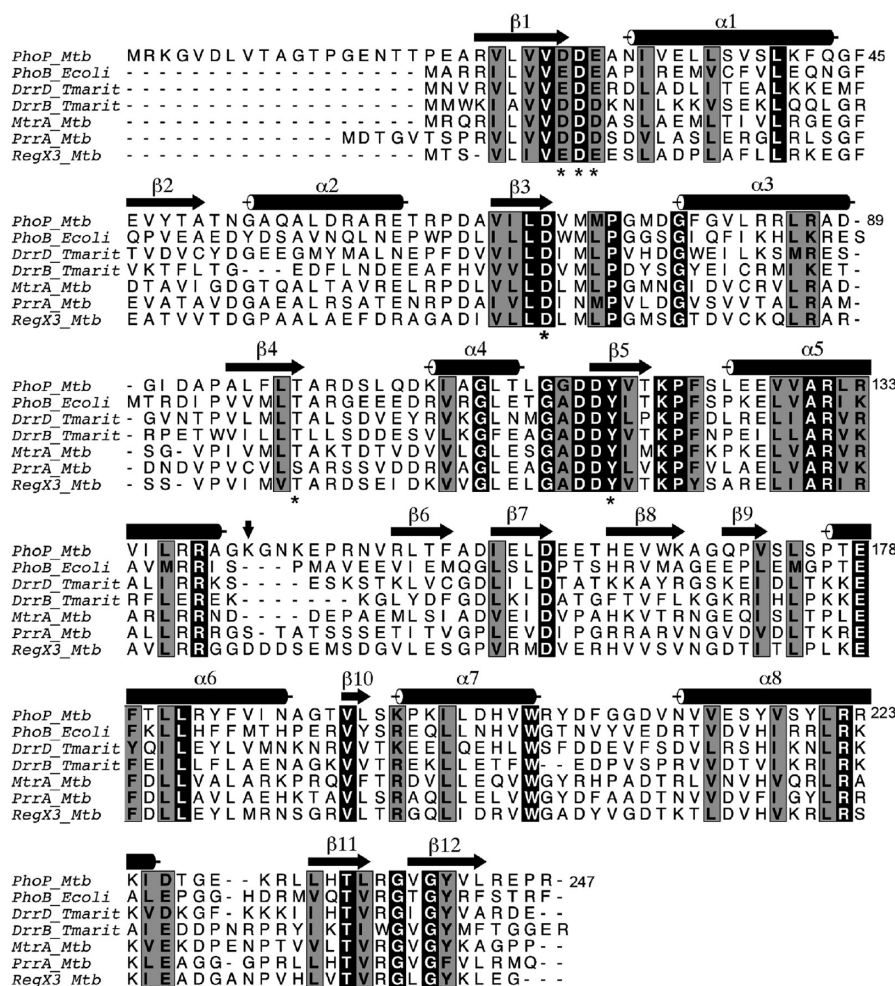


Figure 1. Sequence alignment of response regulators of the OmpR/PhoB subfamily. Sequences were aligned with the program CLUSTALW⁴⁹ and manually adjusted based on structural alignments. The secondary structural elements shown are of the PhoP structure. Identical residues are highlighted in black boxes, while residues with high similarity as defined by CLUSTALW are highlighted in gray boxes. The essential aspartate and other acidic residues at the phosphorylation site, conserved lysine (Lys121 in PhoP), and the switch residues (Thr99 and Tyr118) are labeled with asterisks. A vertical arrow marks the boundary between the N- and C-terminal domains. The linker between domains has variable length as indicated by the gaps in the alignment. This figure was generated with the program ALSCRIPT.⁵⁰

long but less than 0.02 mm thick. A set of MAD data was collected from one crystal at three wavelengths. The data were processed in space group $P2_12_12$ at 2.5 Å with 2 molecules in the asymmetric unit (Table 1). The structure was determined from this set of MAD data with PHENIX³⁷ AutoSol wizard. The resulting initial map was traceable, and the PHENIX AutoBuild wizard built nearly 50% of the model with the rest rebuilt manually. Refinement statistics are reported in Table 2.

Overall Structure of PhoP. The refined structural model contains two polypeptide chains. There are 224 residues for chain A and 221 residues for chain B. Each molecule contains two distinct structural domains. At the linker between the two domains, 6 residues in chain A and 8 residues in chain B were not modeled due to lack of electron density, and these residues are presumably disordered. The last residue at the C-terminus for both chains, 19 residues at amino terminus for chain A, and 20 for chain B, including the 3 residues originating from the plasmid vector, also lacked electron density and therefore were not modeled. Sequence alignments with other homologous RRs suggest that MTB PhoP has an extension of 18 residues at the

N-terminus that are absent from other homologues (Figure 1). Most of these residues are disordered in the crystal structure and would extend away from the surface of the globular domain (Figure 2), suggesting that these extra residues are not involved in the N-terminal domain structure but could play a role in interacting with other proteins.

The N-terminal domain has a $(\beta\alpha)_5$ fold, analogous to other receiver domains from the OmpR/PhoB RR subfamily.⁴² The central core of the structure is made up of a five-stranded parallel β -sheet ($\beta1$ – $\beta5$) surrounded by helices $\alpha1$ and $\alpha5$ on one face and helices $\alpha2$, $\alpha3$, and $\alpha4$ on the other side (Figure 2). The β -strands are mainly composed of residues valine, leucine, and isoleucine, forming a hydrophobic core. The α -helices are amphipathic, with the side facing the β -sheet composed of residues with hydrophobic side chains while those exposed to solvent are mostly hydrophilic.

The C-terminal domain has a winged helix-turn-helix fold typical for the OmpR/PhoB family of RRs (Figure 2). The domain starts with a 4-stranded antiparallel β -sheet, followed by three α -helices and then a C-terminal β -hairpin. A short strand

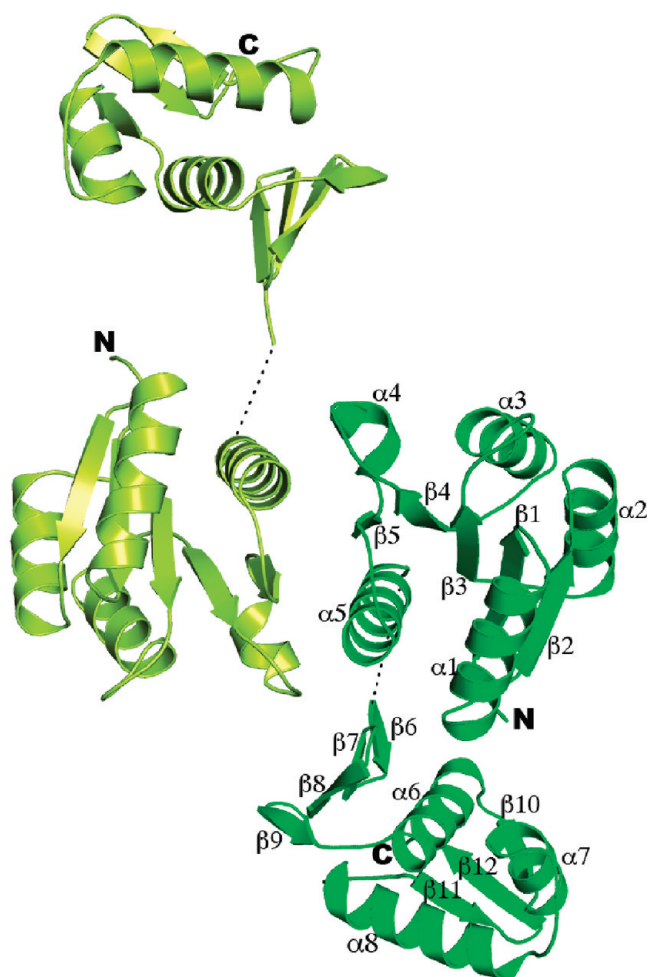


Figure 2. Ribbon diagram of the full-length PhoP dimer. PhoP dimerizes through $\alpha 4$ - $\beta 5$ - $\alpha 5$ of the receiver domain with a 2-fold symmetry. The N- and C-termini for both subunits are marked with N and C, respectively. Secondary structural elements for one of the subunits are labeled. The two ends of the disordered linker are connected with a dotted line. This figure and all other color figures were generated with PYMOL.

between helices $\alpha 6$ and $\alpha 7$ and the β -hairpin together form a 3-stranded antiparallel β -sheet. The two β -sheets sandwich the helices. The C-terminal domain appears to be more flexible than the N-terminal domain. The overall average B factor for the main chain atoms of the N-terminal domain is 31.1 \AA^2 , while that for the C-terminal domain is 37.6 \AA^2 . The average B factor for all atoms is essentially identical for both protein chains in the asymmetric unit at $\sim 35 \text{ \AA}^2$.

Acidic Pocket at the Phosphorylation Site. The regulatory domain exhibits an acidic pocket at the C-terminal ends of strands $\beta 1$ and $\beta 3$, consisting of side chains from residues Asp27, Asp28, Glu29, and Asp71 (Figure 3) (residues are numbered as encoded in the genome with the initial Met as residue number 1). These residues are well conserved in the OmpR/PhoB subfamily of RRs. The side chain of Asp71 is the site for phosphorylation³⁰ and is absolutely conserved, while other acidic side chains are either aspartate or glutamate (Figure 1). Side chains of Asp27, Asp28, and Asp71 as well as the carbonyl oxygen of Met73 are involved in coordinating a divalent cation in some structures of RRs crystallized in the

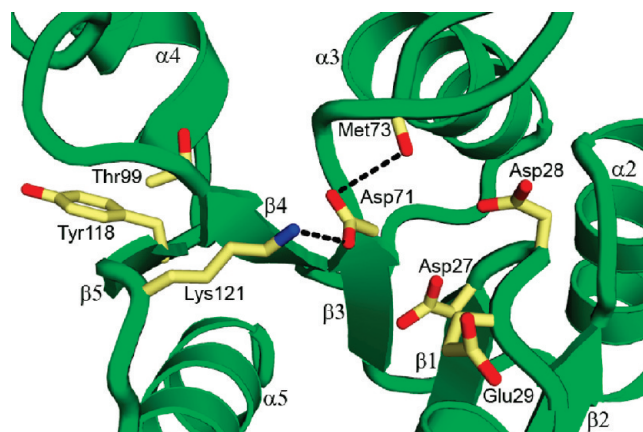


Figure 3. Phosphorylation site and functional residues. The phosphorylation site is located in a shallow pocket at the C-terminal ends of strands $\beta 1$ and $\beta 3$. The side chains of acidic residues, a well-conserved Lys121, and switch residues are shown as sticks. Also shown is the carbonyl group of Met73. Thr99 is located at the end of strand $\beta 4$, and Tyr118 is in the middle of $\beta 5$. Hydrogen bonds are shown as dashed lines.

presence of divalent cations.^{43,44} The PhoP crystal was grown in the absence of divalent cations, and no divalent cation was found in the acidic pocket. However, the side chains are oriented ready to coordinate a divalent cation, except that of Asp71, which would need a slight rotation to orient one of the oxygen atoms toward the bound metal ion. We obtained another PhoP crystal grown in the presence of $\text{Ca}(\text{OAc})_2$, and the calcium ion is coordinated by side chains of Asp27, Asp28, Asp71, and the carbonyl of Met73 (data not shown, structure not reported due to disorder of one entire C-terminal domain out of the two molecules in the asymmetric unit).

Lys121 is also very well conserved, and its amine group forms a hydrogen bond to the side chain of Asp71 (Figure 3). The Lys121 side chain is likely to assist in the dephosphorylation/phosphorylation reactions or stabilize the structure by reducing the local negative charges around the phosphorylation site. The corresponding side chain in other RR structures shifts slightly to avoid steric clashes with beryllium fluoride when comparing activated with nonactivated crystal structures.^{19,20} Thr99 and Tyr118 are also well conserved and are proposed to function as switch residues to relay phosphorylation state to structural changes, which are essential for signal transduction on phosphorylation activation. The side chain of Thr99 is oriented away from the acidic pocket, and the side chain of Tyr118 extends outward toward the dimer interface (Figures 2 and 3) and is involved in π -electron stacking with other side chains as part of the dimer interactions.

Receiver Domain Dimer Interface. In the crystal, two N-terminal domains form a dimer with a 2-fold symmetry through the $\alpha 4$ - $\beta 5$ - $\alpha 5$ face (Figure 4). Helices $\alpha 4$ and $\alpha 5$, strand $\beta 5$, the loops between them, and the long loop between $\beta 4$ and $\alpha 4$ together form a relatively flat surface. The two N-terminal domains interact through this surface to bury a total surface area of $\sim 890 \text{ \AA}^2$ per molecule, calculated with AREA-IMOL of the CCP4 Suite.³⁶ The total solvent-accessible area of the N-terminal domain dimer is $\sim 12\,813 \text{ \AA}^2$. At the center of the dimer interface, side chains of Tyr118 (one of the switch residues mentioned above), Asp117, Glu127, and Arg131 have π -electron stacking interactions and charge–charge interactions. The side

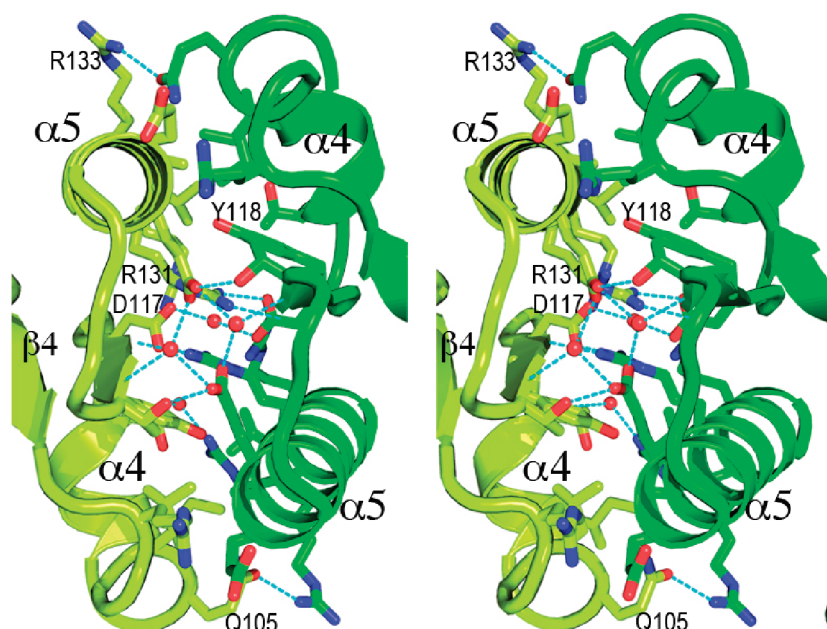


Figure 4. A stereo view of the receiver domain dimer interface. Side chains and water molecules not involved in dimer interactions are not shown for clarity. Hydrogen bonds are depicted as dashed lines. A cluster of side chains with flat groups in the center of the interface interact with π -electron stacking, salt bridges, and hydrogen bonds. Most pronounced are side chains of Tyr118 and Arg131, with 2 rings and 2 guanidinium groups stack in parallel with a spacing of ~ 3.5 Å. There are also two small patches of hydrophobic interactions flanking the central polar interactions.

chain of Arg131 of one molecule forms salt bridges to the side chains of Asp117 and Glu127 of the other molecule. There are also hydrogen bonds between these residues as well as water-mediated interactions (Figure 4). Two small clusters of hydrophobic side chains flank this π -electron stacking core, involving side chains of Ala130 and Val134 of one molecule with those of Leu104 and Ile108 of the other molecule. The dimer interface is mostly hydrophilic, suggesting that the interactions are dynamic in solution. This is consistent with gel filtration and analytical ultracentrifugation results, as described above, which show that in solution there is a monomer–dimer equilibrium that is concentration dependent.

Although well conserved in amino acid sequence, helix $\alpha 5$ has variable length among known structures of PhoB/OmpR subfamily RRs. In PhoP, $\alpha 5$ has 15 residues from Leu125 to Ala139. In some other RR structures, such as MtrA from MTB, helix $\alpha 5$ ends at a Leu residue corresponding to Leu136 of PhoP, 3 residues shorter. In the crystal structure of PrrA from *M. tuberculosis*, there are two molecules in the asymmetric unit, and the length of helix $\alpha 5$ is different between them. In one subunit there are 15 residues in $\alpha 5$ similar to that of PhoP, but in the other subunit the helix extends two more residues at its C-terminal end. Helix $\alpha 4$ and the loops flanking it also have variable structures among RRs and adopt different structures between activated and nonactivated structures of PhoB from *E. coli*.²⁰ The flexibility of $\alpha 4$, $\alpha 5$, and loops allows the dimer interface to be modulated by phosphorylation and adds to the flexibility of the domain linker.

Lack of Interactions between the Receiver and Effector Domain. As shown in Figure 2, the two domains of the same polypeptide chain do not have any direct interactions with each other. The two C-terminal domains of the dimer also do not have any direct interactions. In addition, the loop connecting the N- and C-terminal domains is disordered and thus has no role in

structural interactions between domains other than tethering them together. In the crystal packing, the N-terminal domain of a neighboring molecule interacts with both domains of the same polypeptide chain, thus keeping their relative orientation.

The lack of interactions between the N- and C-terminal domains and between the two C-terminal domains of the dimer suggests that in solution the C-terminal domains are free to move relative to the N-terminal domains. In the sequence alignments (Figure 1) PhoP of MTB has a longer linker than most of other homologous RRs. This long linker also contributes to the freedom of relative movements of the two domains in solution.

Limited Protease Digestion. In order to assess the flexibility of the linker in solution, we carried out limited protease digestion of PhoP by trypsin. Two major fragments were visible on SDS-PAGE after trypsin digestion (Figure 5). N-terminal sequencing of the tryptic fragments indicated that the top band starts with residues K³GVDLV and the lower band begins with N¹⁴⁸VRLTF (single letter codes of amino acid with the residue number of the first one labeled). The N-terminal sequence of the top band indicates a trypsin cleavage site between Arg2 and Lys3, removing 5 residues from N-terminus including those that are vector-generated. The sequence of the lower band indicates another trypsin cleavage site after Arg147, which is within the linker. The results are consistent with the crystal structure, which indicates that residues of the N-terminal extension, as well as the linker residues, are disordered.

The flexibility and relatively long length of the interdomain linker would allow the N-terminal domain to adopt a symmetric dimer while the C-terminal domain could form a tandem dimer when bound to DNA direct repeats. PhoP has been proposed to bind tandem direct repeat DNA as a dimer.³⁰ Most of the known DNA sequences recognized by the OmpR/PhoB subfamily RRs contain direct repeats. The *E. coli* PhoB has been crystallized in complex with its *pho* box DNA, and the structure shows PhoB

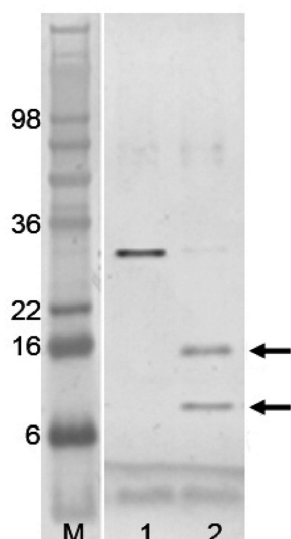


Figure 5. SDS polyacrylamide gel electrophoresis of limited trypsin digestion of PhoP. The lane labeled “M” is the molecular weight marker. Lane 1 is PhoP before trypsin digestion, and lane 2 is after digestion. Calculated molecular weight for PhoP is 27.8 kDa. Protein samples were resolved by SDS-PAGE and visualized by staining with SimplyBlue. Two bands marked with arrows are sequenced by Edman degradation to identify trypsin cleavage sites.

binding to DNA as a tandem dimer. The N-terminal domain of PhoB is expected to form a typical symmetric dimer through the $\alpha 4$ - $\beta 5$ - $\alpha 5$ face when activated, as suggested by the crystal structure in the presence of beryllium fluoride.²⁰ These observations suggest that it is possible for the PhoP effector domain to bind DNA direct repeats as a tandem dimer while the receiver domain forms a symmetric dimer.

Structural Comparison between the Subunits of the Dimer. The two subunits in the dimer are related by a 2-fold noncrystallographic symmetry. The rmsd for the two subunits over all matched C α atoms (residues 18–141 and 150–246) is 1.0 Å. The two N-terminal domains alone superpose very well, with an rmsd of 0.085 Å for C α atoms of residues 18–140. The two C-terminal domains have an rmsd of 0.24 Å for C α atoms of residues 150–245. The last residues at the C-terminus are partially disordered and have a large deviation. The first β -strand of the C-terminal domain, $\beta 6$, also shows measurable shifts. The rmsd between the two subunits in the dimer is mainly from a shift of relative domain positions between the subunits. When the two N-terminal domains are aligned, the two C-terminal domains shift ~ 4 Å. This shift is expected because the only restrictions on their relative positions are from the crystal packing, and it is consistent with conclusions above that in solution the two domains are likely to be able to move freely relatively to each other.

DISCUSSION

The effector domain of MTB PhoP shows a large degree of structural flexibility, consistent with its proposed function of interacting with DNA and other proteins to regulate gene expression. The average *B* factor of the effector domain is consistently higher than that of the receiver domain in both protein molecules of the asymmetric unit. Structural alignment between the isolated effector domain and that of the full-length PhoP gives an rmsd of 1.66 Å for the C α atoms of residues

150–246. Most of the deviations are in the transactivation loop, i.e., residues 204–212. The corresponding loop of PhoB from *E. coli* is proposed to interact with the σ^{70} subunit of the RNA polymerase.²³ This loop is likely to be disordered in solution and adopts a fixed structure upon binding to the RNA polymerase. There is a slight rotation of the N-terminal β -sheet, similar to what observed among the protomers in the crystal structure of the isolated C-terminal domain of PhoP.¹⁶ The sequence recognition helix, $\alpha 8$, aligns very well for the main chain atoms. Several residues in this helix are well conserved (Figure 1). These residues have hydrophobic side chains and are involved in packing with the hydrophobic core of the domain to maintain the same domain folding of this group of proteins, suggesting that the proteins bind DNA in a similar fashion. One exception is Arg222, which is well conserved but not involved in the domain packing. This residue might be important for binding DNA by interacting with the phosphate backbone or stacking with DNA bases. Most of other residues with side chains exposed to the surface are not conserved, consistent with their proposed roles in recognizing different DNA sequences for different RRs. A recent paper⁴⁵ reports that mutation of these residues, including Arg222, into alanine abolishes DNA binding, confirming our earlier prediction based on the structure of the DNA-binding domain.¹⁶

There are currently six full-length structures of the OmpR/PhoB subfamily RRs, DrrB,²⁷ and DrrD²⁸ from *Thermotoga maritima*, RegX3,²⁴ PrrA,²⁶ and MtrA²⁵ from MTB, and the current structure of PhoP. All these structures have different organization of the domain interactions. The PhoP structure is unique in that its receiver domain forms a dimer with the dimer interface involving the $\alpha 4$ - $\beta 5$ - $\alpha 5$ face, which is a common interface among isolated receiver domain dimers that are activated by binding beryllium fluoride, mimicking the phosphorylation state. PhoP also has a completely disordered linker, and its N- and C-terminal domains do not interact with each other or with the domain linker. The closest structure in this respect is the DrrD structure, which has a very small interdomain interface. DrrD has a shorter linker (Figure 1), which is ordered in the crystal structure but has higher temperature factors, suggesting that the linker is flexible. There is minimal interaction between helix $\alpha 5$ and the N-terminal β -sheet of the C-terminal domain, allowing the sequence recognition helix to be fully exposed for insertion into the major groove of DNA.²³ DrrB has the shortest linker of three residues, which is involved in the domain interface and well ordered in the crystal structure. In addition to the linker, the domain interface also involves the interactions between the helix $\alpha 4$ and the N-terminal β -sheet of the effector domain. The DNA-binding elements are also fully exposed in the DrrB crystal structure. Crystal structures of PrrA and MtrA show that the DNA-binding elements are obstructed by the domain interface. Both proteins involve the $\alpha 4$ - $\beta 5$ - $\alpha 5$ face of the N-terminal domain to pack against the recognition helix and some other elements of the C-terminal domain, although the domain interfaces are different between the two proteins. In solution, PrrA can exist in an open conformation, allowing the DNA recognition helix and the β -hairpin exposed for binding DNA.²⁶ The MtrA crystal structure has the most significant interdomain interface that buries ~ 1600 Å² surface area. However, most of the interface interactions are polar or water-mediated, suggesting that in solution the open conformation is likely present. The recombinant protein purified from expression in *E. coli* binds promoter DNA of genes regulated by MtrA without phosphorylation.⁴⁶

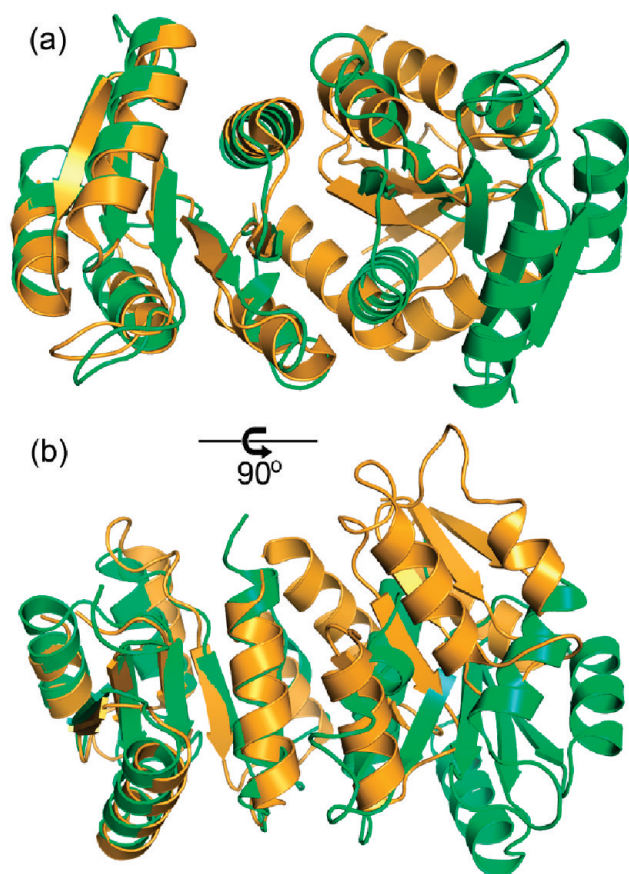


Figure 6. Structural alignment of the receiver domain dimer of PhoP with that of activated PhoB from *E. coli* (PDB code 1ZES). The PhoP structure is colored in green, and PhoB is colored in orange. The structural superposition was carried out on one of the subunits, shown on the left, with 111 matched C α atoms and an rmsd of 1.5 Å. The other subunit, shown on the right, has a shift between the two proteins. Panel (a) has the 2-fold symmetric axis of the PhoP dimer perpendicular to the paper similar to the view in Figure 2, and panel (b) is a 90° rotation from the view in (a). Despite that both involve $\alpha 4$ - $\beta 5$ - $\alpha 5$, the interactions at the dimer interface are different in PhoP and PhoB. The activated PhoB dimer has a more compact interface, with helices from subunits packing more closely.

The receiver domain dimer with the interface involving the $\alpha 4$ - $\beta 5$ - $\alpha 5$ face has been proposed to be the active conformation. Several isolated receiver domains have been crystallized in complex with beryllium fluoride, which occupies the phosphorylation site and mimics the phosphoaspartate.^{19–21,47} All activated receiver domains form a symmetric dimer with the same interface involving $\alpha 4$ - $\beta 5$ - $\alpha 5$. Some isolated receiver domains, such as that of PhoP from *E. coli*,¹⁹ form the same activated dimer interface in the absence of phosphorylation or phosphorylation mimics. However, there are some consistent differences between these unphosphorylated active dimers and the phosphorylation-activated dimers. The switch residues, a Ser/Thr residue and a Tyr residue (Thr99 and Tyr118 in PhoP of MTB, see sequence alignments in Figure 1), are in the same inward conformation facing toward the phosphorylation site in the beryllium fluoride activated dimers. In the unphosphorylated active dimers, the switch residues are in outward conformations. This is also the case for PhoP of MTB; both Thr99 and Tyr118 side chains are pointing away from the phosphorylation site (Figure 2).

Although the PhoP dimer involves the $\alpha 4$ - $\beta 5$ - $\alpha 5$ face, there is a slight shift of the dimer interface when compared to those of the activated dimers (Figure 6). Phosphorylation of the essential aspartate will create favorable hydrogen-bond interactions that shift the side chain of Thr99 toward the phosphate group, causing a shift of the loop $\beta 4$ - $\alpha 4$ and helix $\alpha 4$, which is the part of the structure that is the most flexible and shows the largest variation among known receiver domain structures. These shifts make the inward conformation of the Tyr118 side chain more energetically favorable. Flipping of the Tyr118 side chain inward should result in a rearrangement of the dimer interface because Tyr118 is one of the interface residues (see above for details). Several studies have shown that phosphorylation stabilizes dimer formation of full-length RRs and isolated receiver domains.^{19,25} It is possible that upon phosphorylation Thr99 and Tyr118 of the MTB PhoP protein adopt the inward conformation and the dimer interface rearranges to have similar interactions to the activated receiver dimers, which has a more compact dimer interface (Figure 6). However, the shift should not have much influence on the effector domain structure or its interactions with the receiver domain. This is in sharp contrast to the structure of MtrA, which would release the effector domain for binding DNA if phosphorylation results in the favorable formation of activated receiver domain dimer through the $\alpha 4$ - $\beta 5$ - $\alpha 5$ face. It is likely that for MTB PhoP rearrangement of the dimer interface upon phosphorylation strengthens dimer interactions. Therefore, a larger fraction of PhoP forms dimers through the dimerization of the receiver domain. This, in turn, results in higher DNA-binding affinity by bringing two copies of the DNA-binding domain in close proximity. Current knowledge in the field of the OmpR/PhoB subfamily RRs suggests that these transcription regulators bind DNA as a dimer on direct repeats of DNA sequence. A recent study⁴⁸ found that PhoP binds to the promoter DNA of *msl3*, a gene strongly regulated by PhoP,⁹ at a much higher affinity upon phosphorylation. This is consistent with the proposed mechanism that phosphorylation promotes dimerization of the receiver domain to bring two DNA-binding domains in close proximity for binding direct-repeat DNA sequences.

Accession Codes

Atomic coordinates and structure factors have been deposited with the RCSB Protein Data Bank under accession code 3R0J.

AUTHOR INFORMATION

Corresponding Author

*E-mail: shuishu.wang@usuhs.mil. Phone: (301) 295-3418. Fax: (310) 295-3512.

Funding Sources

This work was supported by the National Institutes of Health grant R01GM079185 and the Uniformed Services University of the Health Sciences intramural grant R071IR.

ACKNOWLEDGMENT

We thank Drs. Vivian Stojanoff, Jean Kakoncic, and Kun Qian at the beamline X6A, NSLS, Brookhaven National Laboratory, Upton, NY, for assistance in data collection, Dr. Stephen Techtman for help with analytical ultracentrifugation experiments, and Drs. Issar Smith, Chou-zen Giam, and Earnest Maynard for helpful comments and revisions on the manuscript.

■ ABBREVIATIONS

HK, histidine kinase; IPTG, isopropyl β -D-1-thiogalactopyranoside; MAD, multiwavelength anomalous diffraction; MTB, *Mycobacterium tuberculosis*; NCS, noncrystallographic symmetry; PMSF, phenylmethanesulfonyl fluoride; PCR, polymerase chain reaction; RR, response regulator; SeMet, selenomethionine; TEV, tobacco etch virus; rmsd, root-mean-square deviation; TCS, two-component system.

■ REFERENCES

- (1) Haydel, S. E. (2010) Extensively Drug-Resistant Tuberculosis: A Sign of the Times and an Impetus for Antimicrobial Discovery. *Pharmaceuticals* 3, 2268–2290.
- (2) Gotoh, Y., Eguchi, Y., Watanabe, T., Okamoto, S., Doi, A., and Utsumi, R. (2010) Two-component signal transduction as potential drug targets in pathogenic bacteria. *Curr. Opin. Microbiol.* 13, 232–239.
- (3) Galperin, M. Y. (2010) Diversity of structure and function of response regulator output domains. *Curr. Opin. Microbiol.* 13, 150–159.
- (4) Cole, S. T., Brosch, R., Parkhill, J., Garnier, T., Churcher, C., Harris, D., Gordon, S. V., Eiglmeier, K., Gas, S., Barry, C. E., 3rd, Tekaia, F., Badcock, K., Basham, D., Brown, D., Chillingworth, T., Connor, R., Davies, R., Devlin, K., Feltwell, T., Gentles, S., Hamlin, N., Holroyd, S., Hornsby, T., Jagels, K., and Barrell, B. G., et al. (1998) Deciphering the biology of *Mycobacterium tuberculosis* from the complete genome sequence. *Nature* 393, 537–544.
- (5) Tucker, P. A., Nowak, E., and Morth, J. P. (2007) Two-component systems of *Mycobacterium tuberculosis*: structure-based approaches. *Methods Enzymol.* 423, 479–501.
- (6) Ewann, F., Jackson, M., Pethe, K., Cooper, A., Mielcarek, N., Ensergueix, D., Gicquel, B., Loch, C., and Supply, P. (2002) Transient requirement of the PrrA-PrrB two-component system for early intracellular multiplication of *Mycobacterium tuberculosis*. *Infect. Immun.* 70, 2256–2263.
- (7) Malhotra, V., Sharma, D., Ramanathan, V. D., Shakila, H., Saini, D. K., Chakravorty, S., Das, T. K., Li, Q., Silver, R. F., Narayanan, P. R., and Tyagi, J. S. (2004) Disruption of response regulator gene, devR, leads to attenuation in virulence of *Mycobacterium tuberculosis*. *FEMS Microbiol. Lett.* 231, 237–245.
- (8) Zahrt, T. C., and Deretic, V. (2001) *Mycobacterium tuberculosis* signal transduction system required for persistent infections. *Proc. Natl. Acad. Sci. U. S. A.* 98, 12706–12711.
- (9) Walters, S. B., Dubnau, E., Kolesnikova, I., Laval, F., Daffe, M., and Smith, I. (2006) The *Mycobacterium tuberculosis* PhoPR two-component system regulates genes essential for virulence and complex lipid biosynthesis. *Mol. Microbiol.* 60, 312–330.
- (10) Perez, E., Samper, S., Bordas, Y., Guilhot, C., Gicquel, B., and Martin, C. (2001) An essential role for phoP in *Mycobacterium tuberculosis* virulence. *Mol. Microbiol.* 41, 179–187.
- (11) Chesne-Seck, M. L., Barilone, N., Boudou, F., Gonzalo Asensio, J., Kolattukudy, P. E., Martin, C., Cole, S. T., Gicquel, B., Gopaul, D. N., and Jackson, M. (2008) A point mutation in the two-component regulator PhoP-PhoR accounts for the absence of polyketide-derived acyltrehaloses but not that of phthiocerol dimycocerosates in *Mycobacterium tuberculosis* H37Ra. *J. Bacteriol.* 190, 1329–1334.
- (12) Domenech, P., Reed, M. B., Dowd, C. S., Manca, C., Kaplan, G., and Barry, C. E., 3rd. (2004) The role of MmpL8 in sulfatide biogenesis and virulence of *Mycobacterium tuberculosis*. *J. Biol. Chem.* 279, 21257–21265.
- (13) Ryndak, M., Wang, S., and Smith, I. (2008) PhoP, a key player in *Mycobacterium tuberculosis* virulence. *Trends Microbiol.* 16, 528–534.
- (14) Frigui, W., Bottai, D., Majlessi, L., Monot, M., Josselin, E., Brodin, P., Garnier, T., Gicquel, B., Martin, C., Leclerc, C., Cole, S. T., and Brosch, R. (2008) Control of *M. tuberculosis* ESAT-6 secretion and specific T cell recognition by PhoP. *PLoS Pathog.* 4, e33.
- (15) Lee, J. S., Krause, R., Schreiber, J., Mollenkopf, H. J., Kowall, J., Stein, R., Jeon, B. Y., Kwak, J. Y., Song, M. K., Patron, J. P., Jorg, S., Roh, K., Cho, S. N., and Kaufmann, S. H. (2008) Mutation in the

transcriptional regulator PhoP contributes to avirulence of *Mycobacterium tuberculosis* H37Ra strain. *Cell Host Microbe* 3, 97–103.

- (16) Wang, S., Engohang-Ndong, J., and Smith, I. (2007) Structure of the DNA-binding domain of the response regulator PhoP from *Mycobacterium tuberculosis*. *Biochemistry* 46, 14751–14761.
- (17) Kondo, H., Nakagawa, A., Nishihira, J., Nishimura, Y., Mizuno, T., and Tanaka, I. (1997) *Escherichia coli* positive regulator OmpR has a large loop structure at the putative RNA polymerase interaction site. *Nat. Struct. Biol.* 4, 28–31.
- (18) Martinez-Hackert, E., and Stock, A. M. (1997) Structural relationships in the OmpR family of winged-helix transcription factors. *J. Mol. Biol.* 269, 301–312.
- (19) Bachhawat, P., and Stock, A. M. (2007) Crystal structures of the receiver domain of the response regulator PhoP from *Escherichia coli* in the absence and presence of the phosphoryl analog beryll fluoride. *J. Bacteriol.* 189, 5987–5995.
- (20) Bachhawat, P., Swapna, G. V., Montelione, G. T., and Stock, A. M. (2005) Mechanism of activation for transcription factor PhoB suggested by different modes of dimerization in the inactive and active states. *Structure* 13, 1353–1363.
- (21) Toro-Roman, A., Mack, T. R., and Stock, A. M. (2005) Structural analysis and solution studies of the activated regulatory domain of the response regulator ArcA: a symmetric dimer mediated by the alpha4-beta5-alpha5 face. *J. Mol. Biol.* 349, 11–26.
- (22) Toro-Roman, A., Wu, T., and Stock, A. M. (2005) A common dimerization interface in bacterial response regulators KdpE and TorR. *Protein Sci.* 14, 3077–3088.
- (23) Blanco, A. G., Sola, M., Gomis-Ruth, F. X., and Coll, M. (2002) Tandem DNA recognition by PhoB, a two-component signal transduction transcriptional activator. *Structure* 10, 701–713.
- (24) King-Scott, J., Nowak, E., Mylonas, E., Panjikar, S., Roessle, M., Svergun, D. I., and Tucker, P. A. (2007) The structure of a full-length response regulator from *Mycobacterium tuberculosis* in a stabilized three-dimensional domain-swapped, activated state. *J. Biol. Chem.* 282, 37717–37729.
- (25) Friedland, N., Mack, T. R., Yu, M., Hung, L. W., Terwilliger, T. C., Waldo, G. S., and Stock, A. M. (2007) Domain orientation in the inactive response regulator *Mycobacterium tuberculosis* MtrA provides a barrier to activation. *Biochemistry* 46, 6733–6743.
- (26) Nowak, E., Panjikar, S., Konarev, P., Svergun, D. I., and Tucker, P. A. (2006) The structural basis of signal transduction for the response regulator PrrA from *Mycobacterium tuberculosis*. *J. Biol. Chem.* 281, 9659–9666.
- (27) Robinson, V. L., Wu, T., and Stock, A. M. (2003) Structural analysis of the domain interface in DrrB, a response regulator of the OmpR/PhoB subfamily. *J. Bacteriol.* 185, 4186–4194.
- (28) Buckler, D. R., Zhou, Y., and Stock, A. M. (2002) Evidence of intradomain and interdomain flexibility in an OmpR/PhoB homolog from *Thermotoga maritima*. *Structure (Cambridge, MA, U. S.)* 10, 153–164.
- (29) Sinha, A., Gupta, S., Bhutani, S., Pathak, A., and Sarkar, D. (2008) PhoP-PhoP interaction at adjacent PhoP binding sites is influenced by protein phosphorylation. *J. Bacteriol.* 190, 1317–1328.
- (30) Gupta, S., Sinha, A., and Sarkar, D. (2006) Transcriptional autoregulation by *Mycobacterium tuberculosis* PhoP involves recognition of novel direct repeat sequences in the regulatory region of the promoter. *FEBS Lett.* 580, 5328–5338.
- (31) Kapust, R. B., Tozser, J., Fox, J. D., Anderson, D. E., Cherry, S., Copeland, T. D., and Waugh, D. S. (2001) Tobacco etch virus protease: mechanism of autolysis and rational design of stable mutants with wild-type catalytic proficiency. *Protein Eng.* 14, 993–1000.
- (32) Bradford, M. M. (1976) A rapid and sensitive method for the quantitation of microgram quantities of protein utilizing the principle of protein-dye binding. *Anal. Biochem.* 72, 248–254.
- (33) Van Duyn, G. D., Standaert, R. F., Karplus, P. A., Schreiber, S. L., and Clardy, J. (1993) Atomic structures of the human immunophilin FKBP-12 complexes with FK506 and rapamycin. *J. Mol. Biol.* 229, 105–124.
- (34) Otwinowski, Z., and Minor, W. (1996) Processing of X-ray diffraction data collected in oscillation mode. *Methods Enzymol.* 276, 307–326.

- (35) Evans, P. (2006) Scaling and assessment of data quality. *Acta Crystallogr., Sect. D: Biol. Crystallogr.* 62, 72–82.
- (36) CCP4. (1994) The CCP4 suite: programs for protein crystallography. *Acta Crystallogr., Sect. D: Biol. Crystallogr.* 50, 760–763.
- (37) Adams, P. D., Afonine, P. V., Bunkoczi, G., Chen, V. B., Davis, I. W., Echols, N., Headd, J. J., Hung, L. W., Kapral, G. J., Grosse-Kunstleve, R. W., McCoy, A. J., Moriarty, N. W., Oeffner, R., Read, R. J., Richardson, D. C., Richardson, J. S., Terwilliger, T. C., and Zwart, P. H. (2010) PHENIX: a comprehensive Python-based system for macromolecular structure solution. *Acta Crystallogr., Sect. D: Biol. Crystallogr.* 66, 213–221.
- (38) Murshudov, G. N., Vagin, A. A., and Dodson, E. J. (1997) Refinement of macromolecular structures by the maximum-likelihood method. *Acta Crystallogr., Sect. D: Biol. Crystallogr.* 53, 240–255.
- (39) Emsley, P., and Cowtan, K. (2004) Coot: model-building tools for molecular graphics. *Acta Crystallogr., Sect. D: Biol. Crystallogr.* 60, 2126–2132.
- (40) Winn, M. D., Isupov, M. N., and Murshudov, G. N. (2001) Use of TLS parameters to model anisotropic displacements in macromolecular refinement. *Acta Crystallogr., Sect. D: Biol. Crystallogr.* 57, 122–133.
- (41) Chen, V. B., Arendall, W. B., III, Headd, J. J., Keedy, D. A., Immormino, R. M., Kapral, G. J., Murray, L. W., Richardson, J. S., and Richardson, D. C. (2010) MolProbity: all-atom structure validation for macromolecular crystallography. *Acta Crystallogr., Sect. D: Biol. Crystallogr.* 66, 12–21.
- (42) Bourret, R. B. (2010) Receiver domain structure and function in response regulator proteins. *Curr. Opin. Microbiol.* 13, 142–149.
- (43) Birck, C., Chen, Y., Hulett, F. M., and Samama, J. P. (2003) The crystal structure of the phosphorylation domain in PhoP reveals a functional tandem association mediated by an asymmetric interface. *J. Bacteriol.* 185, 254–261.
- (44) Davies, K. M., Lowe, E. D., Venien-Bryan, C., and Johnson, L. N. (2009) The HupR receiver domain crystal structure in its nonphospho and inhibitory phospho states. *J. Mol. Biol.* 385, 51–64.
- (45) Das, A. K., Pathak, A., Sinha, A., Datt, M., Singh, B., Karthikeyan, S., and Sarkar, D. (2010) A single-amino-acid substitution in the C terminus of PhoP determines DNA-binding specificity of the virulence-associated response regulator from *Mycobacterium tuberculosis*. *J. Mol. Biol.* 398, 647–656.
- (46) Li, Y., Zeng, J., Zhang, H., and He, Z. G. (2010) The characterization of conserved binding motifs and potential target genes for *M. tuberculosis* MtrAB reveals a link between the two-component system and the drug resistance of *M. smegmatis*. *BMC Microbiol.* 10, 242.
- (47) Barbieri, C. M., Mack, T. R., Robinson, V. L., Miller, M. T., and Stock, A. M. (2010) Regulation of response regulator autophosphorylation through interdomain contacts. *J. Biol. Chem.* 285, 32325–32335.
- (48) Pathak, A., Goyal, R., Sinha, A., and Sarkar, D. (2010) Domain structure of virulence-associated response regulator PhoP of *Mycobacterium tuberculosis*: role of the linker region in regulator-promoter interaction(s). *J. Biol. Chem.* 285, 34309–34318.
- (49) Thompson, J. D., Higgins, D. G., and Gibson, T. J. (1994) CLUSTAL W: improving the sensitivity of progressive multiple sequence alignment through sequence weighting, position-specific gap penalties and weight matrix choice. *Nucleic Acids Res.* 22, 4673–4680.
- (50) Barton, G. J. (1993) ALSCRIPT: a tool to format multiple sequence alignments. *Protein Eng.* 6, 37–40.

■ NOTE ADDED AFTER ASAP PUBLICATION

After this paper was published ASAP June 13, 2011, some corrections were made to the text; the revised version was published June 28, 2011.